



TIM CAMPBELL 800-400-7500

Item # \_\_\_\_\_

Job \_\_\_\_\_

## Starsys™ Scope Storage System

Designed for environments where aesthetics are important and cleanliness is essential, Starsys™ is a highly organized system that meets the demands for storage, transport and productivity centers. This modular system provides solutions that can be easily reconfigured to meet the rapid and constant change in today's healthcare environment. Scope storage is a prime example of how Starsys can be configured to meet a specific application.

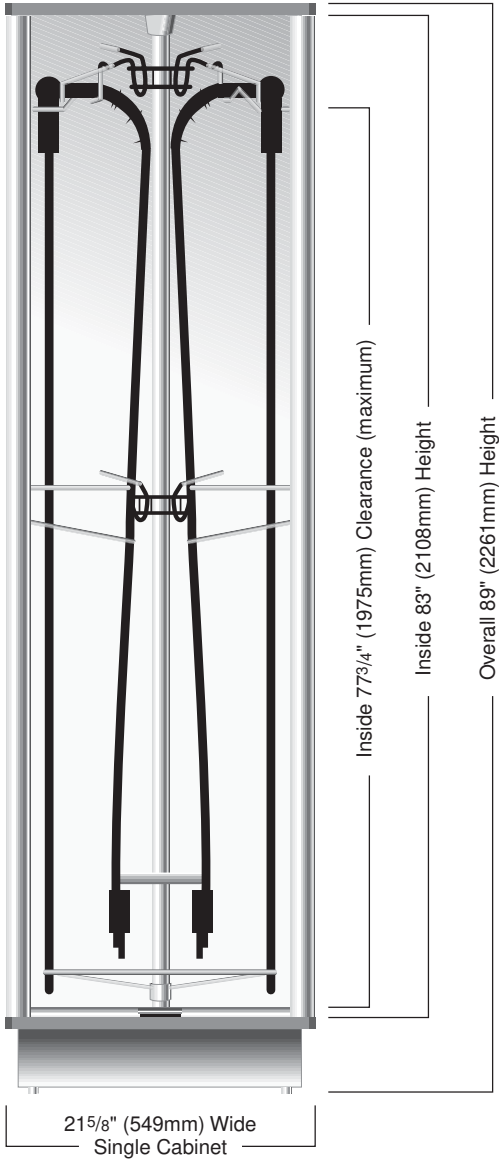
The Starsys scope storage cabinet is a high-density storage solution, which provides quick access and retrieval, visual inventory and easy identification.

- **Accessible** – The Metro Carousel™ rack easily rotates bringing each scope bracket front and center for tangle-free scope retrieval or return.
- **High Density** – Each Metro Carousel™ rack holds up to 11 scopes. Single-wide cabinets (capacity 11) contain one rack and double-wide (capacity 22) contain two racks. This equates to an average of 3 scopes per square foot, and more impressively, more scopes per linear foot (6) than any cabinet on the market.
- **Adjustable** – The carousel rack has a stainless steel post with adjustment grooves every inch. This allows height adjustment for the scope brackets, cord managers, hoop and bumper, to accommodate various scope lengths.
- **Eliminates Obsolescence** – The scope bracket and cord managers can be removed without tools. As technology progresses and scope dimensions change, new brackets may be installed in existing cabinets, saving the expense of a new cabinet.
- **Durable** – The cabinet is constructed with polymer side panels which will not rust, dent or chip. The polymer solid door will not deflect upon impact, preventing potential scope damage.

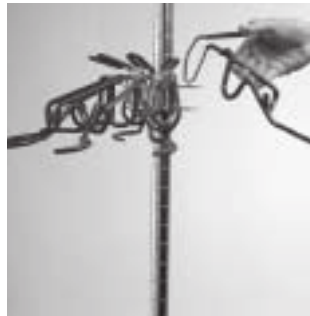




# Starsys™ Scope Storage System



The scope brackets were specifically designed for the two different size scopes. They are vinyl coated in colors:  
 Blue – Pulmonary  
 Orange – Gastrointestinal  
 Weight capacity: 5 lbs. (27kg)



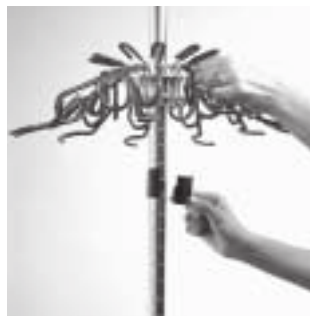
Individual scope brackets and cord managers are easy to remove and interchange. This allows you to mix and match different types of scopes in the same cabinet. It also eliminates obsolescence, as newly developed brackets for changing scope dimensions can be easily retrofitted, saving the expense of a new cabinet.



The mid-level cord manager is used for all types of scopes and is also vinyl coated orange. It keeps cords from tangling and provides strain relief for light boxes or connectors.

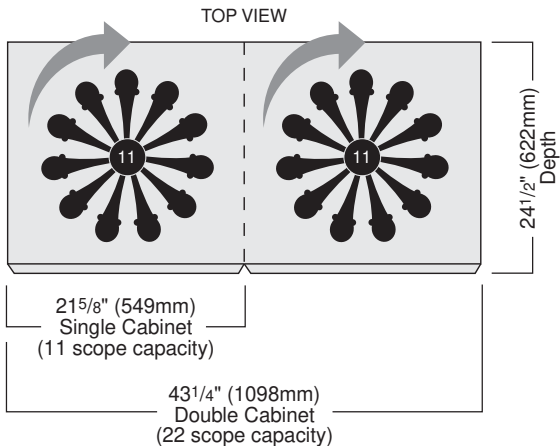


Vinyl-coated hoop and rubber bumper restrain umbilical cords and provide additional protection.



Scope brackets, cord manager and bottom hoop are all adjustable on 1" (25mm) increments. This allows you to customize – without tools – the interior to the length of scope you are storing.

**The Starsys Carousel™ rack rotates providing access to any scope in the cabinet.**





# Starsys™ Scope Storage System



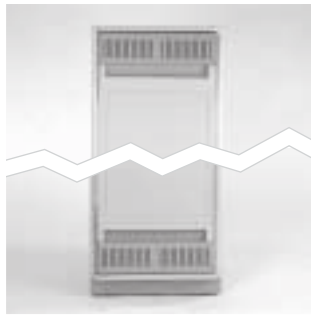
Optional scope bracket label holders are available to identify the type of scope or to help locate or track scope inventory by serial number. Holds pressure sensitive labels (not included) up to 1 1/4" (31mm) H x 3" (76mm) W.



Door/drawer label holders are available to identify contents of cabinet without having to open door. Holds paper labels (not included) up to 1 1/2" (25mm) H x 16" (406mm) L.



2-piece plastic drip pan contains remaining fluids and is easily removed for cleaning and drying.



Door vents are strategically located at top and bottom of door to allow maximum air flow. Bottom vent is located near drip pan, which helps prevent odors.

## Cabinets

(in.)	Height/Depth/Width (mm)	Description	Cat. No.
89x24 1/2x21 5/8	2261x622x549	Single-wide with no Door or Top Level Scope Brackets	SXS88WSC
89x24 1/2x21 5/8	2261x622x549	Single-wide with Left-hinged 90° Locking Door, and 11 GI Scope Brackets	SXS88WSC1L
89x24 1/2x21 5/8	2261x622x549	Single-wide with Right-hinged 90° Locking Door, and 11 GI Scope Brackets	SXS88WSC1R
89x24 1/2x43 1/4	2261x622x1098	Double-wide with no Door or Top Level Scope Brackets	SXD88WSC
89x24 1/2x43 1/4	2261x622x1098	Double-wide with Left-hinged and Right-hinged 90° Locking Door, and 11 GI Scope Brackets	SXD88WSC1

## Scope Brackets

Description	Cat. No.
GI (large) Scope Bracket — Orange (maximum weight load 5 lbs. [2.7kg])	SXSCP1
Pulmonary (small) Scope Bracket — Blue (maximum weight load 5 lbs. [2.7kg])	SXSCP2

## Doors

Description	Cat. No.
83" H (2108mm), Left-hinged, 90° Locking, Solid, Vented	SXDRA83L1BSV
83" H (2108mm), Left-hinged, 90° Non-locking, Solid, Vented	SXDRA83L1NSV
83" H (2108mm), Left-hinged, 270° Locking, Solid, Vented	SXDRA83L2BSV
83" H (2108mm), Left-hinged, 270° Non-locking, Solid, Vented	SXDRA83L2NSV
83" H (2108mm), Right-hinged, 90° Locking, Solid, Vented	SXDRA83R1BSV
83" H (2108mm), Right-hinged, 90° Non-locking, Solid, Vented	SXDRA83R1NSV
83" H (2108mm), Right-hinged, 270° Locking, Solid, Vented	SXDRA83R2BSV
83" H (2108mm), Right-hinged, 270° Non-locking, Solid, Vented	SXDRA83R2NSV

## Label Holders

(in.)	Height/Width (mm)	Description	Cat. No.
1 1/4x3	31x76	12 pk. Label Holder for Scope Bracket, Holds Pressure-Sensitive Label (not included)	SXSCPLBL
1x16	25x406	10 pk. Label Holder for Door, Holds Paper Labels (not included)	SXLABKIT

## Filler Kits

Description	Cat. No.
Pair of 88" H (2235mm) Back of Cabinet to Wall Filler Kit	SX88BKFLR*
One 83" H (2108mm) Unit to Unit Filler Kit for 88" (2235mm) Units	SX88UUFLR**

\* Back filler kit is used when cabinet is adjacent to a run of WorkCenters. It fills the gap behind the unit when the unit is pulled away from the wall to be flush with front of countertop.

\*\* Unit to unit filler kit to hide the seam between two adjacent units.

Job \_\_\_\_\_

TIM CAMPBELL 800-400-7500



# Starsys™ Scope Storage System



## The Starsys System



A Bright New Way To Work

Manufactured by:

