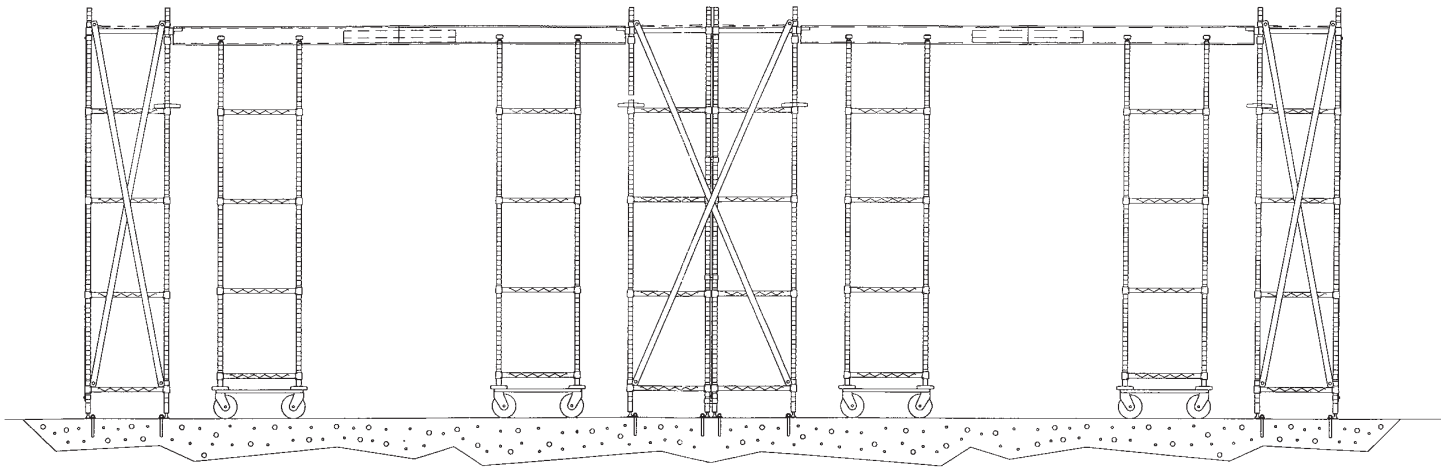


Seismic Top Track

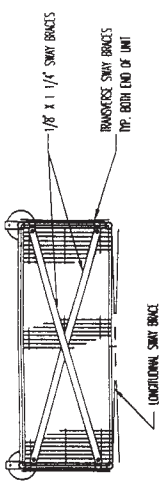


TO ASSEMBLE YOUR UNIT:

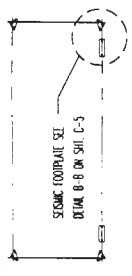
- Refer to OSHPD Approved Drawings Included Inside
- Refer to Standard Top Track Shelving System Assembly Instructions
- Refer to Exploded Assembly Views and Part Callouts Inside

Stationary End Unit (Drawing C-3)

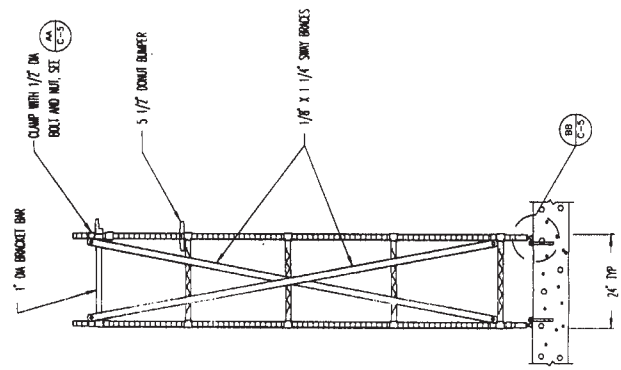
- NOTES:
1. 18" MIN. CLEARANCE BELOW SPRINKLERS TO TOP SHELF
 2. 25 LB/50 FT MAXIMUM LOAD PER SHELF FOR ALL STATIONARY END UNITS
 3. ADDITIONAL SHELVES MAY BE ADDED TO THE TOP TRACK STATIONARY END UNIT BUT LOADS SHALL NOT EXCEED 25 LB/50 FT. MAXIMUM PER UNIT



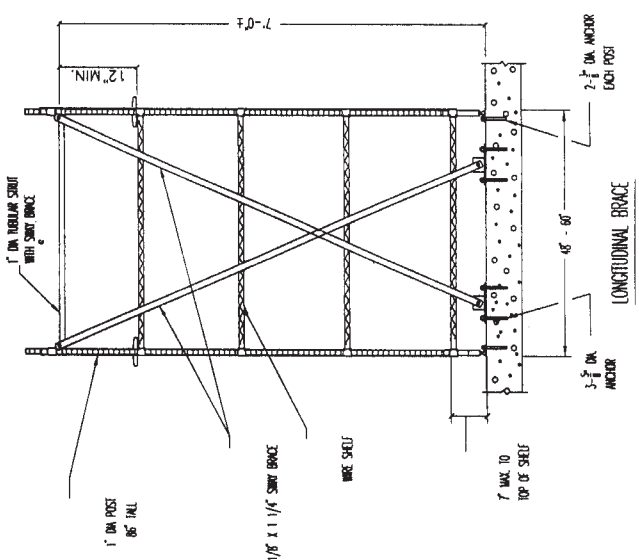
TOP PLAN VIEW



BASE PLAN VIEW



TRANSVERSE BRACE



LONGITUDINAL BRACE

APPROVED
 California Office of Statewide
 Health Planning and Development
FIXED EQUIPMENT ANCHORAGE
 R-0220 Aug 9, 1996
 *Valid for 3 Years Maximum
 Terrence Frigo (916) 654-3362

REGISTERED PROFESSIONAL ENGINEER
 DONALD R. SPANND
 No. 11872
 Exp. 12-31-96
 STATE OF CALIFORNIA

REGISTERED PROFESSIONAL ARCHITECT
 JOHN W. HENNING
 No. 11872
 Exp. 12-31-96
 STATE OF CALIFORNIA

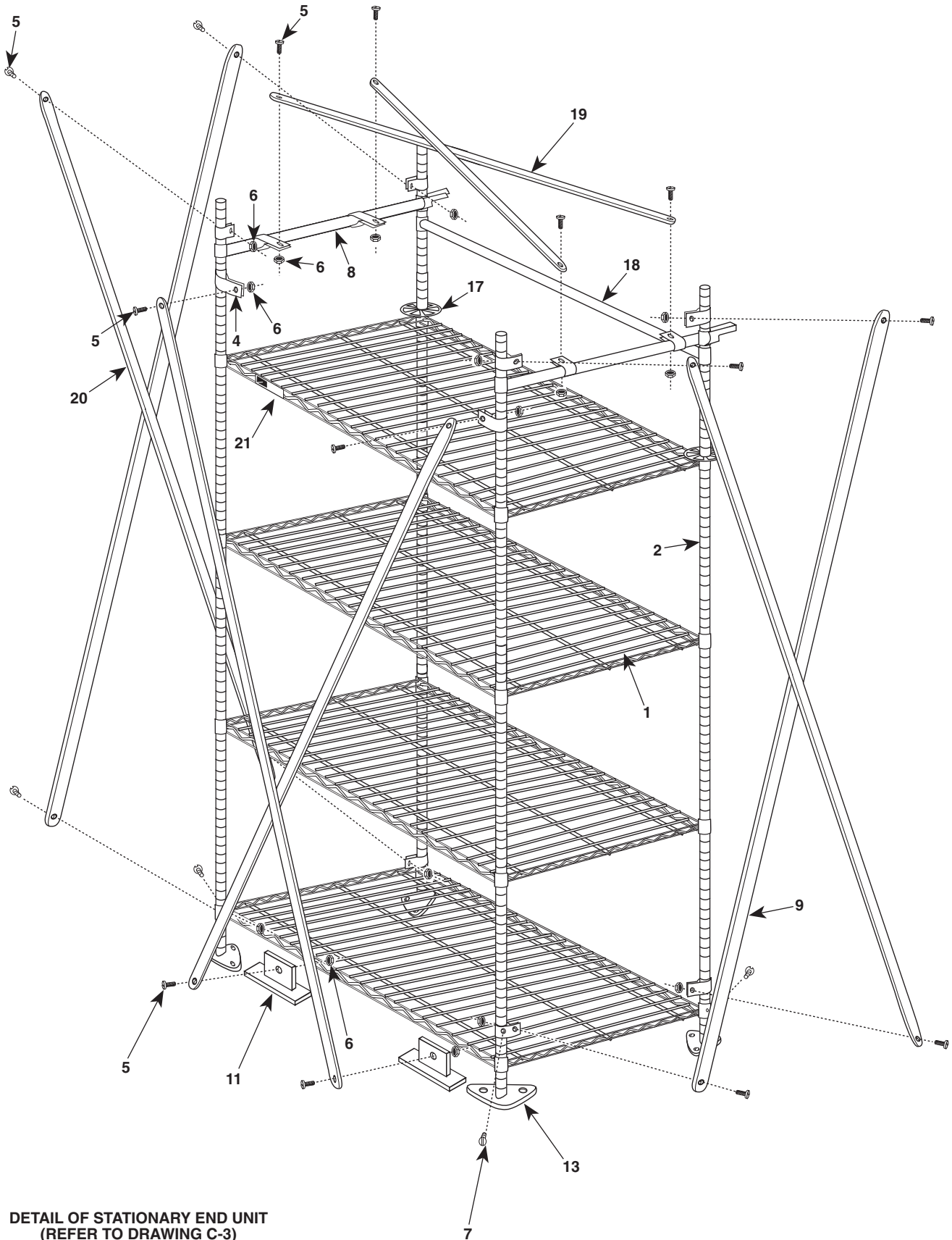
BLAIR & JOHNSON ASSOCIATES
 1000 R STREET, SUITE 100
 SACRAMENTO, CALIFORNIA 95811
 TEL: (916) 441-1100
 FAX: (916) 441-1101

REV. NO. 891500 SHIT. NO. C-3
 AUG. 1996

Inter IM/ET/RC
 Inter IM/ET/RC
 Inter IM/ET/RC

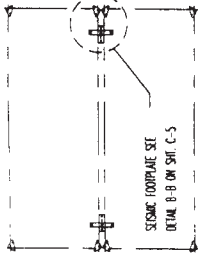
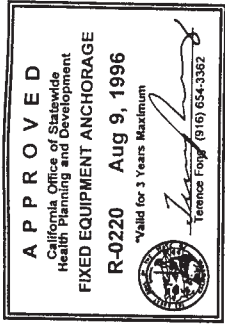
PROJECT: STATIONARY END UNIT
 SHEET: SEISMIC TOP TRACK
 DRAWING NO.: C19138

Stationary End Unit

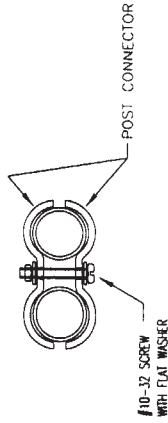


DETAIL OF STATIONARY END UNIT
(REFER TO DRAWING C-3)

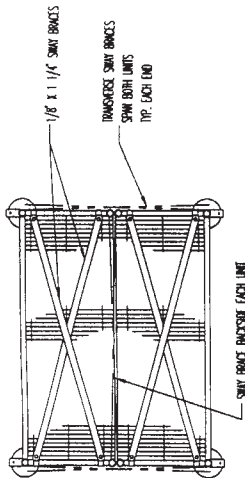
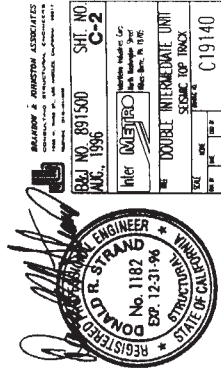
Double Intermediate Unit (Drawing C-2)



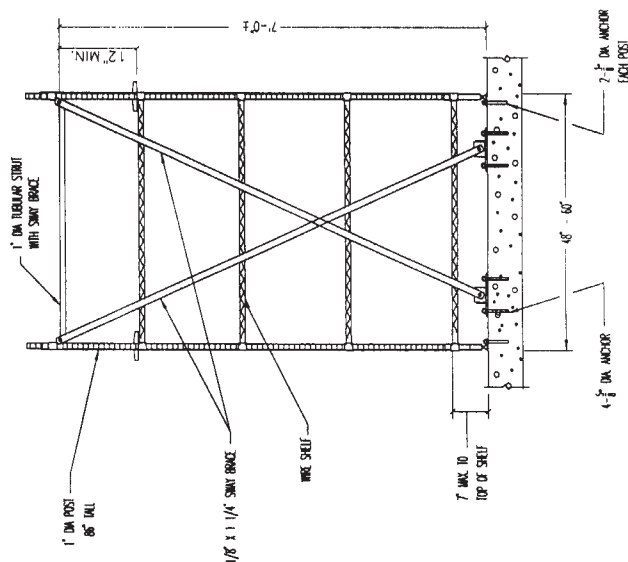
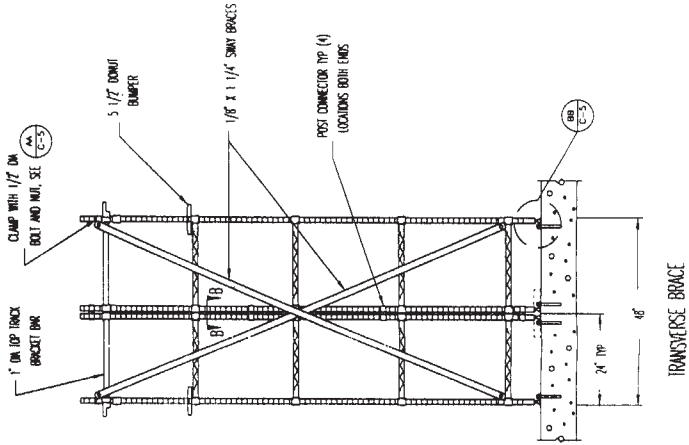
BASE PLAN VIEW



SECTION B-B
No Scale



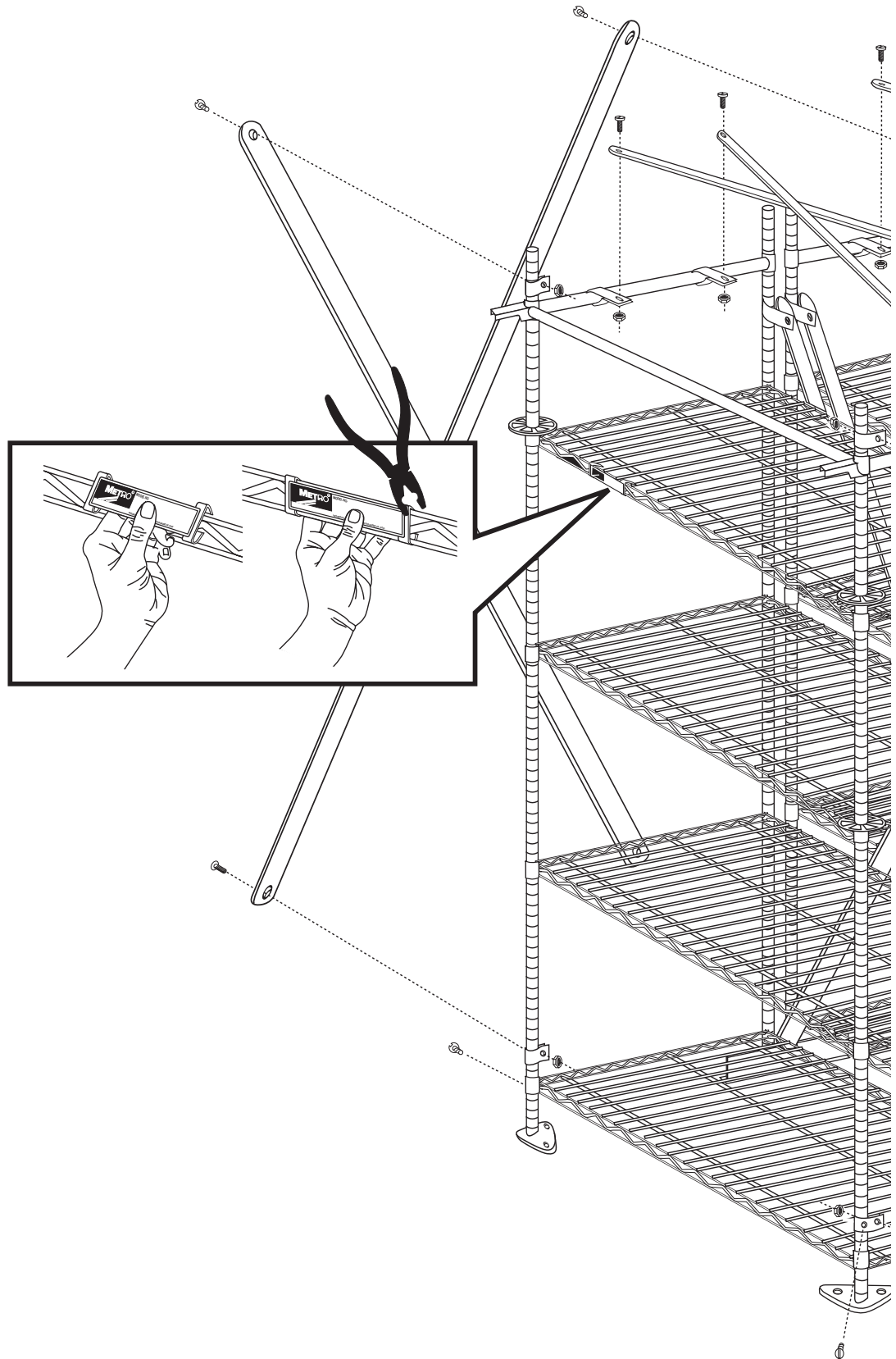
TOP PLAN VIEW

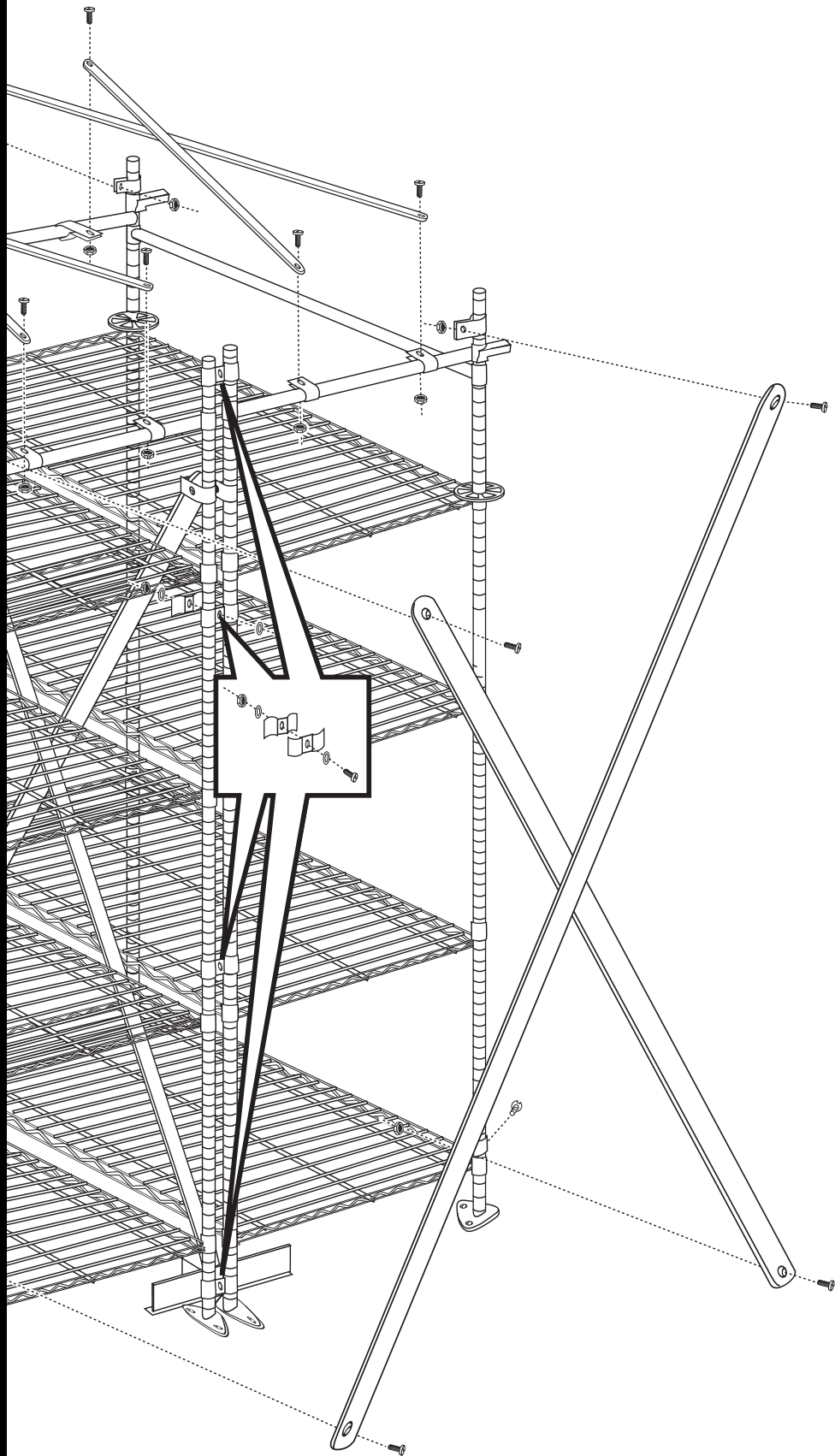


- NOTES:
1. 16" MIN CLEARANCE BELOW SPRINKLERS TO TOP SHELF
 2. 25 LB/SQ FT MAXIMUM LOAD PER SHELF FOR ALL TOP TRACK INTERMEDIATE UNITS
 3. ADDITIONAL SHELVES MAY BE ADDED TO THE INTERMEDIATE UNIT BUT LOADS SHALL NOT EXCEED 25 LB/SQ FT. MAXIMUM PER UNIT

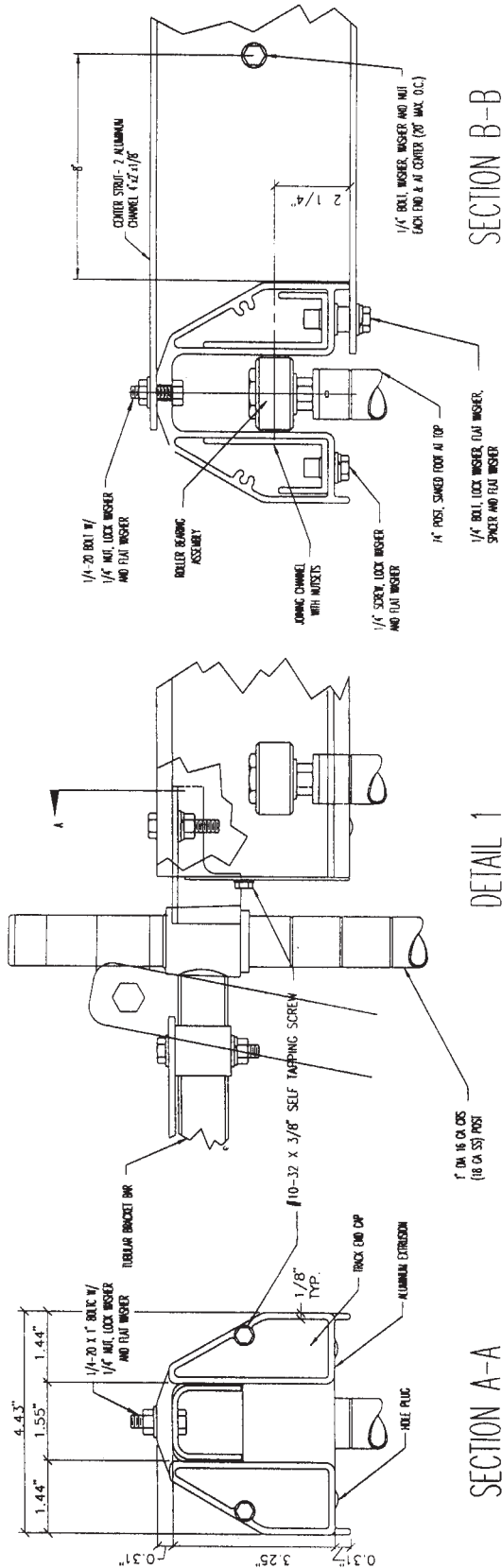
TIM CAMPBELL 800-400-7500

Double Intermediate Unit





Track Assembly (Drawing C-4)



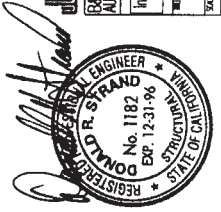
SECTION A-A

DETAIL 1

SECTION B-B

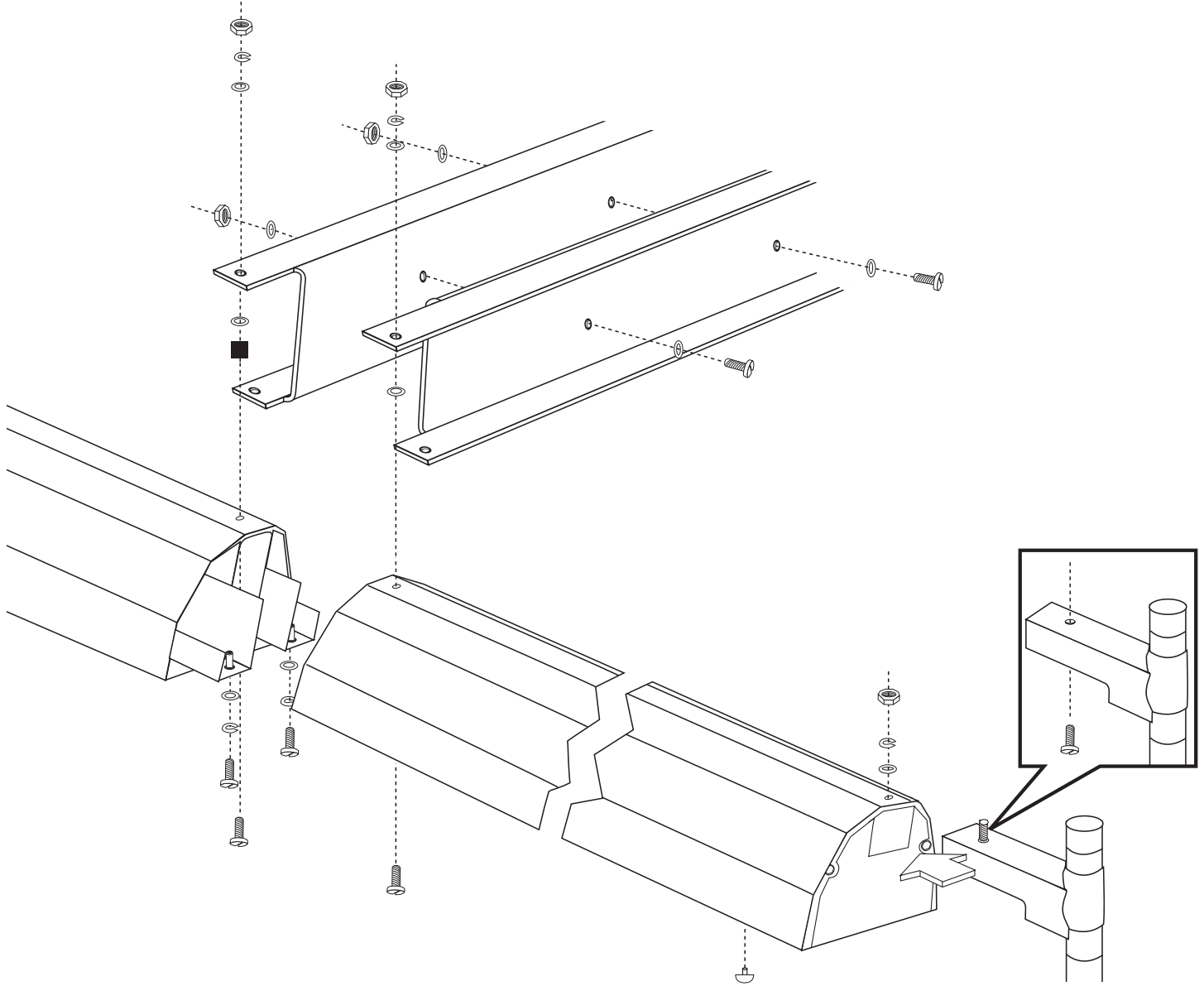
APPROVED
 California Office of Statewide
 Health Planning and Development
FIXED EQUIPMENT ANCHORAGE
 R-0220 Aug 9, 1996
 *Valid for 3 Years Maximum

[Signature]
 Ernest Ponce (916) 654-3362



REGISTERED PROFESSIONAL ENGINEER State of California No. 11182 Exp. 12-31-96	
PROJECT NO. 891500 AUG., 1996	SHEET NO. C-4
TITLE SEISMIC TOP TRACK	DRAWING NO. 019113

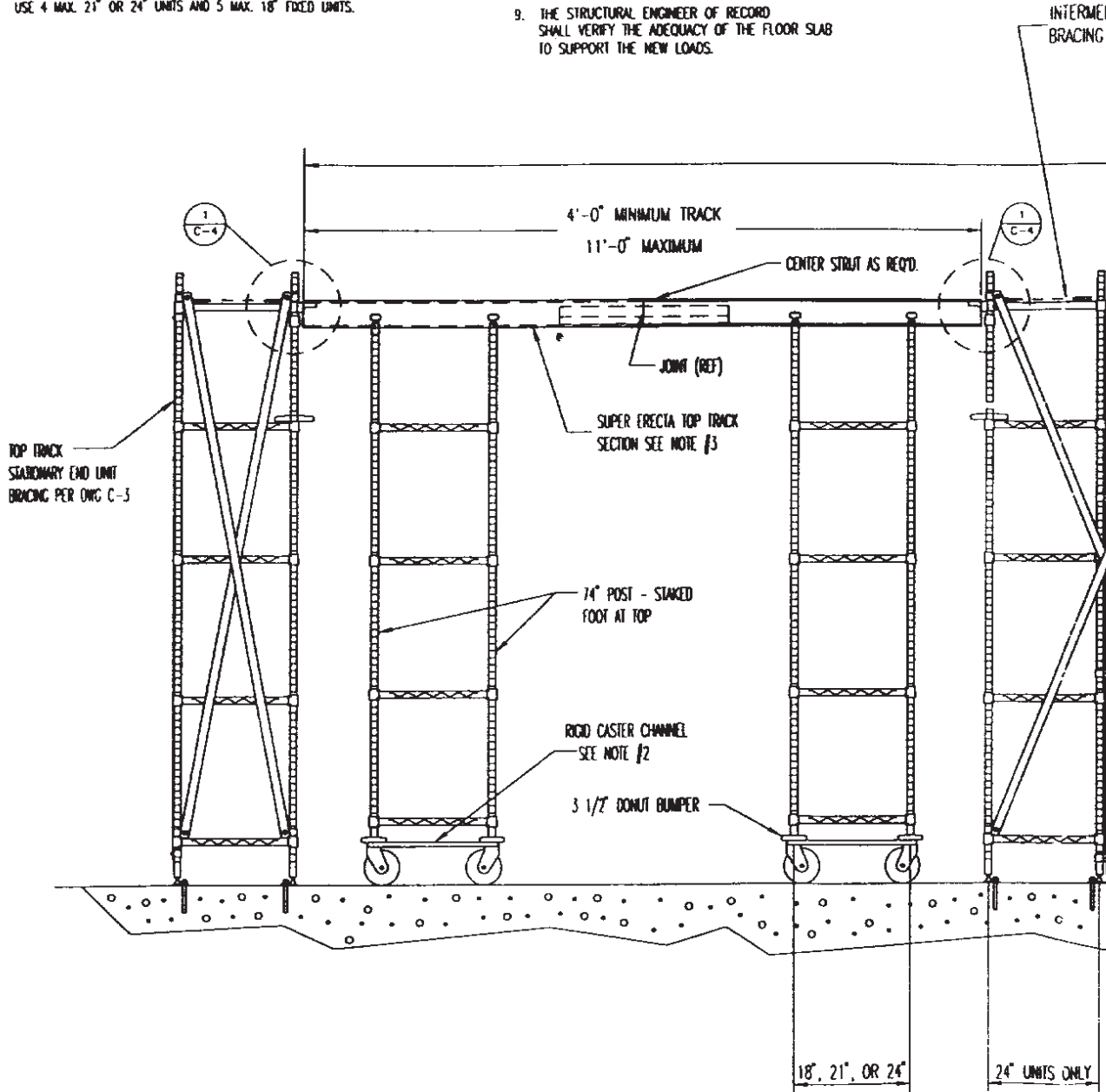
Track Assembly



Seismic Top Track (Drawing C-1)

NOTES:

1. WHEN DESIRED OVERALL TRACK LENGTH EXCEEDS 11'-0", A STATIONARY INTERMEDIATE UNIT MUST BE UTILIZED FOR SUPPORT. UNIT MUST BE AN OSHA/PP PRE-APPROVED BACK-TO-BACK TOP TRACK UNIT.
2. SHELF WIDTH, BRACKET BAR LENGTH AND CASTER CHANNELS ARE AVAILABLE IN 18", 21", AND 24" LENGTHS.
3. TRACK SECTIONS ARE AVAILABLE IN 4'-0", 5'-0", 6'-0" AND 7'-0" LENGTHS.
4. END SHELVING UNITS MUST CONTAIN 4-24" SHELVES MINIMUM.
5. NO MORE THAN 8" TOTAL OF MOBILE UNITS ALLOWABLE BETWEEN FIXED UNITS, WITH A MAXIMUM LOAD OF 3600 LBS TOTAL (900# MAXIMUM PER MOBILE UNIT). USE 4 MAX. 21" OR 24" UNITS AND 5 MAX. 18" FIXED UNITS.
6. ALL SEISMIC TOP TRACK UNITS (BOTH STATIONARY AND MOBILE) ARE LIMITED TO NO MORE THAN 25 LB PER SQ. FT. ADDITIONAL SHELVES MAY BE ADDED BUT LIMITED TO A MAXIMUM LOAD OF 25 LB PER CU. FT. PER UNIT.
7. METAL TAGS ARE PLACED AT DIAGONALLY OPPOSITE CORNERS OF ALL TOP SHELVES LIMITING LOADS TO 25 LB. PER SQ. FT. ON ALL SHELVING.
8. LOCATE TOP SHELF OF UNIT AT FOURTH GROOVE (#71) OR FIFTH GROOVE (#70) FROM THE TOP OF THE POST.
9. THE STRUCTURAL ENGINEER OF RECORD SHALL VERIFY THE ADEQUACY OF THE FLOOR SLAB TO SUPPORT THE NEW LOADS.

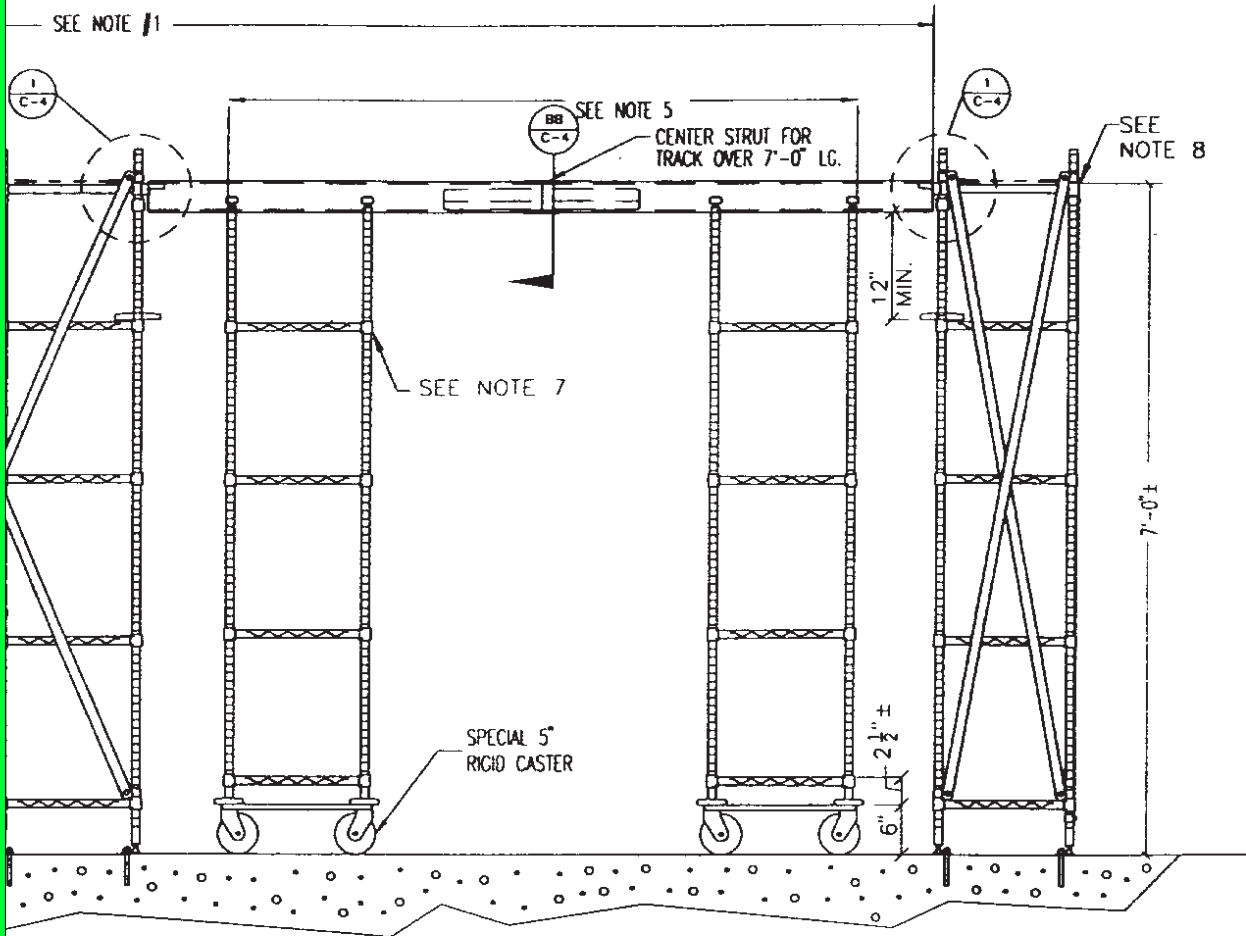


A P P R O V E D
 California Office of Statewide
 Health Planning and Development
FIXED EQUIPMENT ANCHORAGE
R-0220 Aug 9, 1996
 *Valid for 3 Years Maximum



Terence Forng
 Terence Forng (916) 654-3362

DATE UNIT
 PER DWG C-2



BRANDON & JOHNSON ASSOCIATES
 CONSULTING STRUCTURAL ENGINEERS
 1000 N. 10TH ST., LOS ANGELES, CALIFORNIA 90017
 (213) 481-1000

B&J NO. 891500 **SHT. NO.**
AUG, 1996 **C-1**

Inter **METRO** Interstate Industrial Corp.
 North Washington Street
 Alhambra, CA 91803

SEISMIC TOP TRACK

SCALE: DRAWING NO. **D19113**

Seismic-Approved Top Track Components

Item No.	Qty. Single End Unit	Qty. Double Inter Unit	Qty. Center Strut	Part Number	Description
1	4	8	—	24XXNC	Chrome Shelves
2	4	8	—	86SAP	Staked Posts
3	2	4	—	C06-038	Bags of Split Sleeves
4	14	20	—	SBCLAMP-02	Seismic Clamps
5	16	22	—	F04-214	1/2-13x1 1/4" Lg. Hexhead Bolt
6	16	22	—	F02-023	1/2-13 Jam Nut
7	14	20	—	F04-159	1/4x3/4 Lg. Tek Screw
8	2	4	—	TT-Bracket24	Bracket Bar
9	4	—	—	TTSB24END	End Unit Sway Brace
10	—	4	—	TTSB2424END	Intermediate Unit Sway Brace
11	2	—	—	TTB-SGLANCHOR	Single Anchor Plate
12	—	2	—	TTB-DBLANCHOR	Double Anchor Plate
13	4	8	—	TTB-FP	Seismic Top Track Footplate
14	2	4	—	TTEC-0102	End Caps
15	8	16	—	C06-195	Hole Plugs
16	4	8	—	F04-107*	10-32x3/8 Self Tapping Screw
17	2	4	—	C06-070	5 1/2" Donut Bumpers
18	1	2	—	TTB-BRACEXX	Tubular Brace
19	2	4	—	TTSB24XXTOP	Top Sway Brace
20	2	4	—	TTSBXXBACK	Back Sway Brace
21	1	2	—	SA-TAG	OSHPD Weight Limit Tag
22	—	16	—	9994Z-HOLE	Post Clamp
23	—	16	—	F06-046*	#10 Flat Washer
24	—	8	—	F02-029*	#10-24 Hex Nut
25	—	8	—	F04-023	#10-24x1" Lg. Phillips Screw
26	—	—	2	STRUTXX	Seismic Strut
27	2	4	18	F06-020	1/4 ID x 9/16 OD x 3/64" Washer
28	2	4	11	F04-038B*	1/4 -20x1 1/4" Lg. Hex Head Bolt
29	2	4	7	F02-015A*	1/4 -20 Hex Nut
30	2	4	8	F06-021	1/4" Split Lock Washer
31	—	—	4	F07-056*	1/2x1/4x1/4 Aluminum Spacer
32	1	—	—	L01-282	Seismic Top Track Assembly Instructions

NOTE: Substitute shelf length (48, 54 or 60) for XX to obtain part number.

For a complete 'Single length system' the following would be required:

- 2 ea. Seismic-Approved Stationary End Units
- 1 ea. Center Strut (if track length exceeds 7 feet)
- 1 ea. Standard Catalog Track Set (11 foot maximum)
- Standard Catalog Mobile Units as required (5 max. at 18", 4 max. at 21" & 24")

For a complete 'Double length system' the following would be required:

- 2 ea. Seismic-Approved Stationary End Units
- 1 ea. Seismic-Approved Stationary Double Intermediate Unit
- 2 ea. Center Struts (if track length exceeds 7 feet)
- 2 ea. Standard Catalog Track Sets (11 foot maximum)
- Standard Catalog Mobile Units as required (5 max. at 18", 4 max. at 21" & 24")