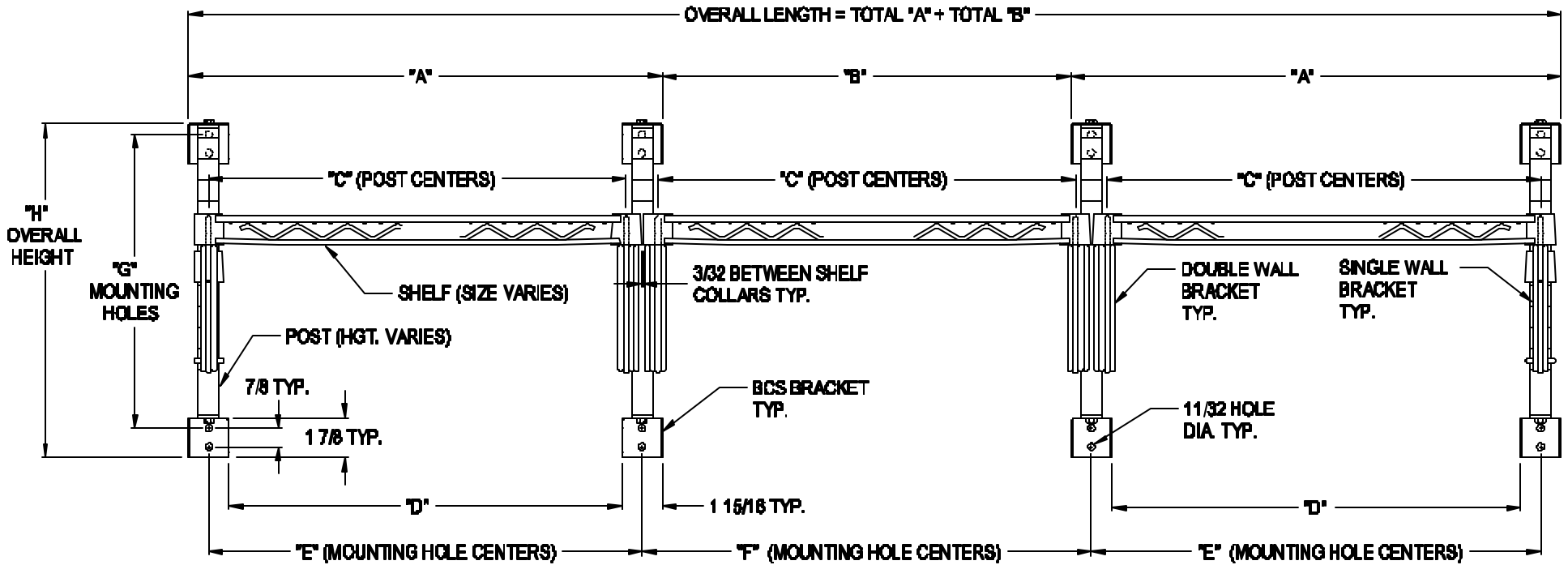


POST TYPE WALL MOUNT SHELF (SINGLE SHELF)

SHELF LENGTH	DIM. A	DIM. B	DIM. C	DIM. D	DIM. E	DIM. F
24	24 3/8	20 1/2	22 13/32	22 7/16	14 (13PDF POST)	15 7/8 (13PDF POST)
30	30 3/8	26 1/2	28 13/32	28 7/16	34 (33PDF POST)	35 7/8 (33PDF POST)
36	36 3/8	32 1/2	34 13/32	34 7/16	54 1/16 (54PDF POST)	55 15/16 (54PDF POST)
42	42 3/8	38 1/2	40 13/32	40 7/16	62 1/16 (63PDF POST)	63 15/16 (63PDF POST)
48	48 3/8	44 1/2	46 13/32	46 7/16	—	—
54	54 3/8	50 1/2	52 13/32	52 7/16	—	—
60	60 3/8	56 1/2	58 13/32	58 7/16	—	—
72	72 3/8	68 1/2	70 13/32	70 7/16	—	—

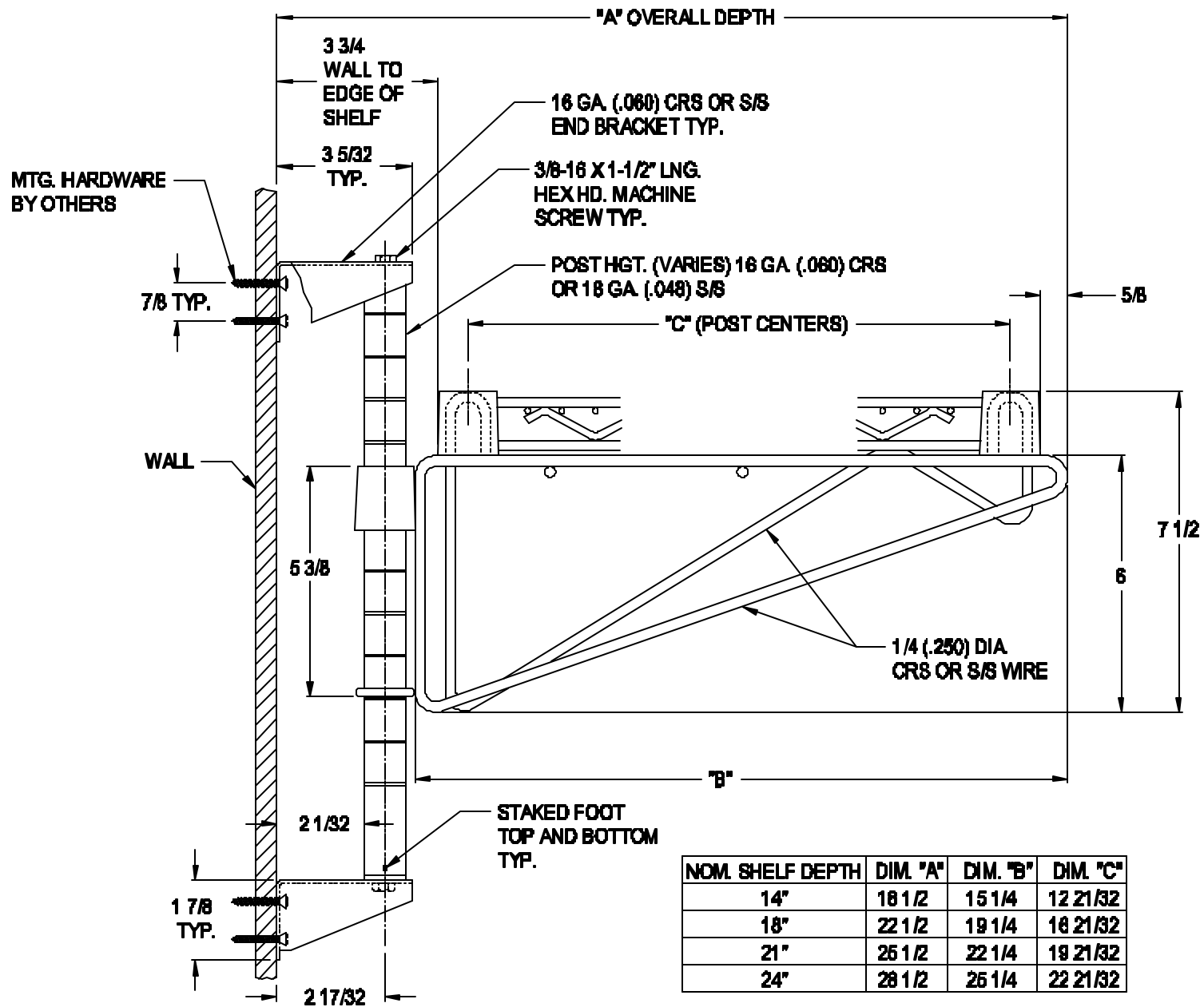
1. INTERMEDIATE BRACKETS NOT SHOWN. SEE PRICE LIST.
2. MOUNTING HARDWARE NOT INCLUDED.



POST TYPE WALL MOUNT SHELF (MULTIPLE SHELF)

SHELF LENGTH	DIM. A	DIM. B	DIM. C	DIM. D	DIM. E	DIM. F	DIM. G	DIM. H
24	25 1/8	22	22 13/32	21 1/4	23 3/16	23 15/16	14 (13PDF POST)	15 7/8 (13PDF POST)
30	31 1/8	28	28 13/32	27 1/4	28 3/16	29 15/16	34 (33PDF POST)	35 7/8 (33PDF POST)
36	37 1/8	34	34 13/32	33 1/4	35 3/16	35 15/16	54 1/16 (54PDF POST)	55 15/16 (54PDF POST)
42	43 1/8	40	40 13/32	39 1/4	41 3/16	41 15/16	62 1/16 (63PDF POST)	63 15/16 (63PDF POST)
48	49 1/8	46	46 13/32	45 1/4	47 3/16	47 15/16	---	---
54	55 1/8	52	52 13/32	51 1/4	53 3/16	53 15/16	---	---
60	61 1/8	58	58 13/32	57 1/4	59 3/16	59 15/16	---	---
72	73 1/8	70	70 13/32		71 3/16	71 15/16	---	---

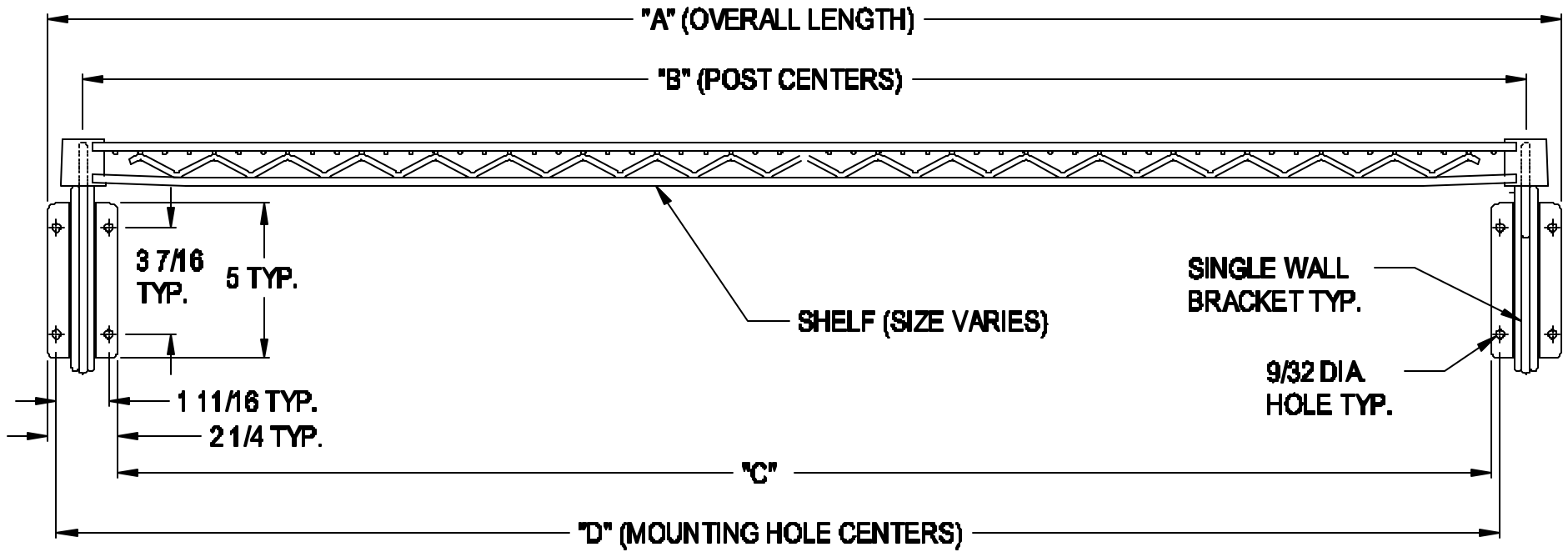
1. INTERMEDIATE BRACKETS NOT SHOWN - SEE PRICE LIST.
2. MOUNTING HARDWARE NOT INCLUDED



SUPER ERECTA POST TYPE WALL MOUNT

(INTERMEDIATE BRACKET NOT SHOWN)

TIM CAMPBELL 800-400-7500

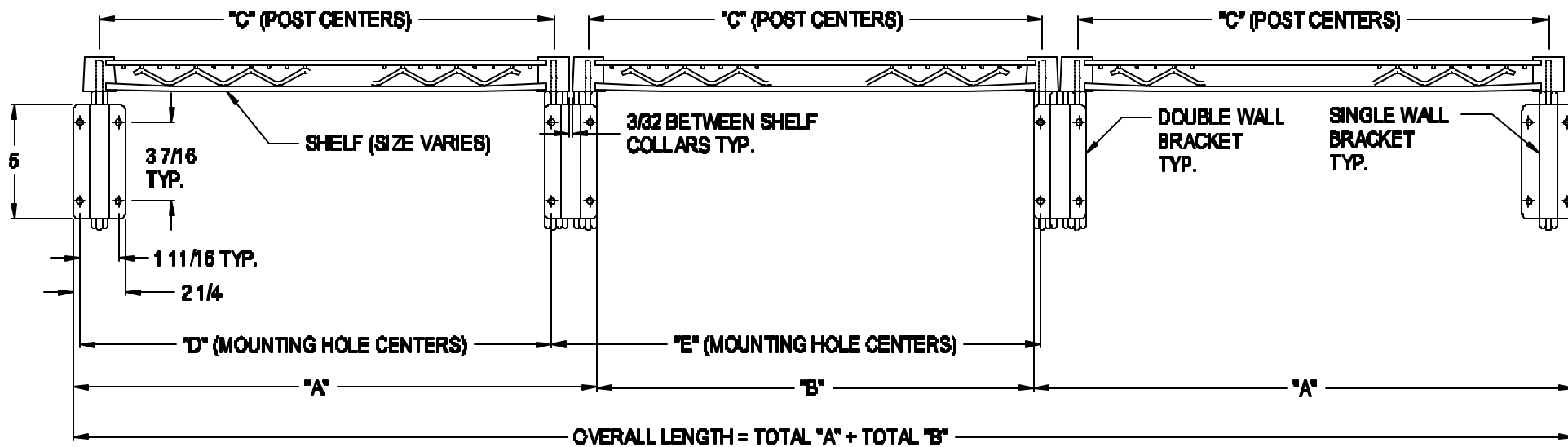


DIRECT WALL MOUNT SHELF (SINGLE SHELF)

SHELF LENGTH	DIM. A	DIM. B	DIM. C	DIM. D
24	24 11/32	22 13/32	20 3/16	22 7/16
30	30 11/32	28 13/32	26 3/16	28 7/16
36	36 11/32	34 13/32	32 3/16	34 7/16
42	42 11/32	40 13/32	38 3/16	40 7/16
48	48 11/32	46 13/32	44 3/16	46 7/16
54	54 11/32	52 13/32	50 3/16	52 7/16
60	60 11/32	58 13/32	56 3/16	58 7/16
72	72 11/32	70 13/32	68 3/16	70 7/16

1. MOUNTING HARDWARE NOT INCLUDED.

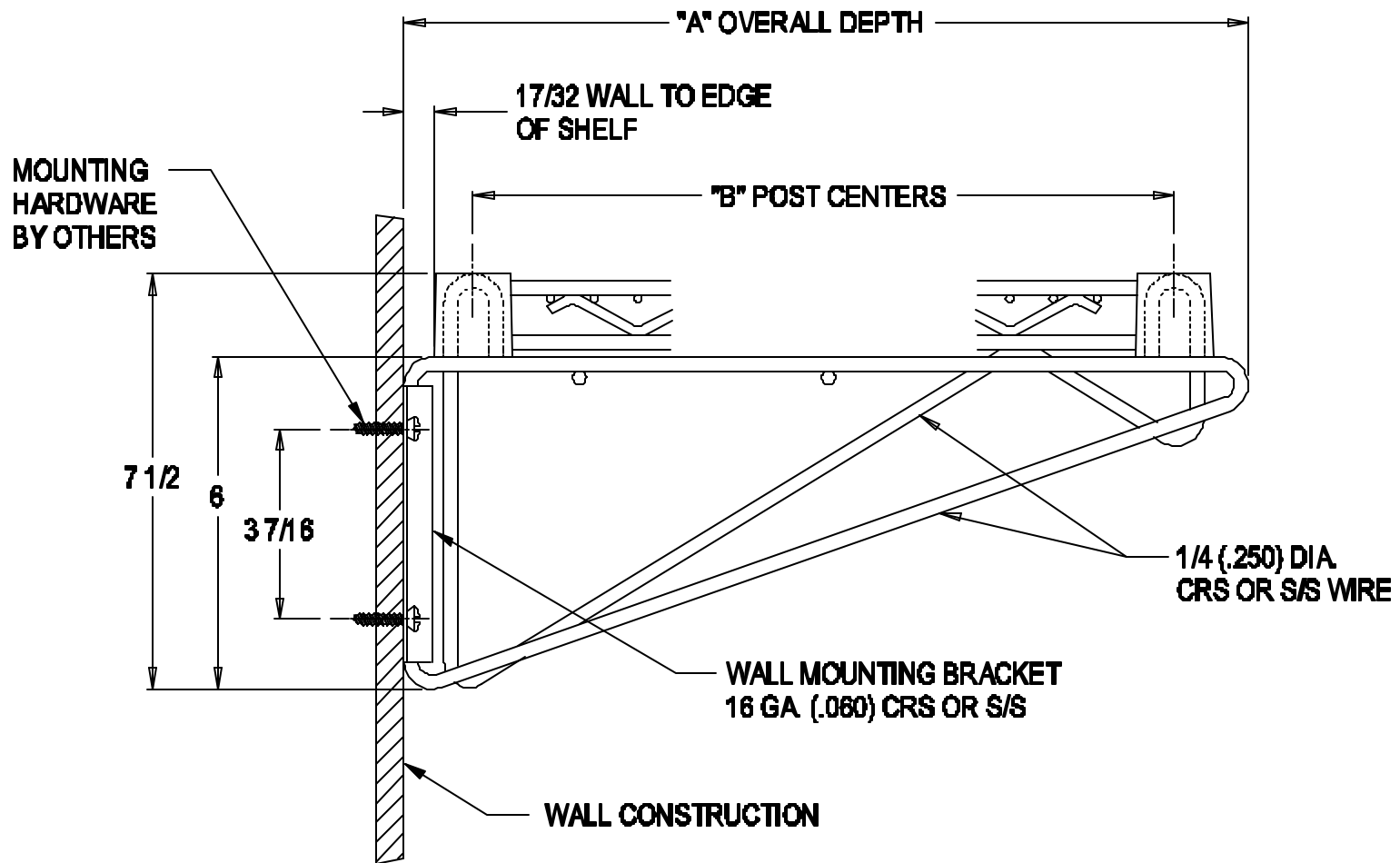
TIM CAMPBELL 800-400-7500



DIRECT WALL MOUNT SHELF (MULTIPLE SHELF)

SHELF LENGTH	DIM. A	DIM. B	DIM. C	DIM. D	DIM. E
24	25 7/16	21 11/16	22 13/32	23 3/16	23 15/16
30	31 7/16	27 11/16	28 13/32	29 3/16	29 15/16
36	37 7/16	33 11/16	34 13/32	35 3/16	35 15/16
42	43 7/16	39 11/16	40 13/32	41 3/16	41 15/16
48	49 7/16	45 11/16	46 13/32	47 3/16	47 15/16
54	55 7/16	51 11/16	52 13/32	53 3/16	53 15/16
60	61 7/16	57 11/16	58 13/32	59 3/16	59 15/16
72	73 7/16	69 11/16	70 13/32	71 3/16	71 15/16

1. MOUNTING HARDWARE NOT INCLUDED



NOM. SHELF DEPTH	DIM. "A"	DIM. "B"
14"	15 1/4	12 21/32
18"	18 1/4	16 21/32
21"	21 1/4	19 21/32
24"	24 1/4	22 21/32

SUPER ERECTA DIRECT WALL MOUNT

Application Chart – SES Wall Mount Shelving

Finish	Temp.	Abrasion	Chip Res.	Corrosion (Salt Spray)	Cut Through	Cart Wash	Finish Warranty	NSF Listed
Nickel Chrome	-20/120° F. -29/49° C.	Very Good	Excellent	Very Good	N/A	Not Recommended	1 Year	Yes
Brite	-20/120° F. -29/49° C.	Very Good	Very Good	Fair	N/A	Not Recommended	1 Year	Yes
Metroseal II	-20/120° F. -29/49° C.	Excellent	Excellent	Excellent	Excellent	Not Recommended	10 Years	Yes
Stainless	-20/120° F. -29/49° C.	Excellent	Excellent	Excellent	N/A	Excellent	1 Year	Yes
Designer	-20/120° F. -29/49° C.	Good	Fair	Good	Fair	Not Recommended	1 year	No

FINISH/PLATING REF.

Chrome – Multi-layer coating consisting of a single layer of bright nickel, a thin layer of chromium, and an organic laquer top coat.

Super Brite – A single layer coating consisting of clear chromate zinc plating, with an organic laquer top coat.

Metroseal II - corrosion resistant finish in a multi-layer coating consisting of a cross-linked thermoset Organic coating which displays superior abrasion, gouge, and chemical resistance. The intermediate layer is chromate conversion coated zinc plating.

Stainless Steel – Type 304 stainless steel, a low carbon non-magnetic austenitic stainless steel with electropolish finish, which facilitates passivation of the metal for enhanced corrosion resistance.

SES WALL MOUNT SHELVING CHEMICAL RESISTANCE					
	Nickel Chrome	Stainless Steel	Super Brite	Metroseal II	Designer (Epoxy)
ACID, INORGANIC	RANK	RANK	RANK	RANK	RANK
Hydrochloric acid (37%)	3	3	3	1	1
Nitric acid (10%)	2	1	3	1	1
Nitric acid (70%)	3	1	3	3	3
Phosphoric acid (10%)	2	1	2	2	2
Phosphoric acid (85%)	2	1	3	2	2
Sulfuric acid (10%)	2	2	3	1	1
Sulfuric acid (30%)	3	3	3	2	2
Sulfuric acid (98%)	3	3	3	3	3
ACID, ORGANIC					
Acetic acid (5%)	2	1	2	2	2
Acetic acid (50%)	3	2	4	3	3
Acetic acid (glacial)	4	2	4	4	4
Citric acid (10%)	1	1	1	1	1
Oleic acid	1	1	2	1	1
ALCOHOL					
Ethanol	1	1	1	1	1
Isopropyl (2-propanol)	1	1	1	1	1
Methanol	1	1	1	1	1
ALDEHYDE					
Formaldehyde (37%)	1	1	1	1	1
AMIDE					
Dimethyl formamide (DMF)	2	2	2	3	3
BASE					
Ammonium Hydroxide	2	2	2	1	1
Sodium Hydroxide	2	2	3	1	1
CLEANING MATERIAL					
Ammonia	2	2	2	1	1
Bleach	2	2	2	2	2
Detergent	1	1	1	1	1
Quaternary Ammonia	1	1	1	2	2
Commercial Compound					
Anti-freeze	2	2	2	1	1

SES WALL MOUNT SHELVING CHEMICAL RESISTANCE					
	Nickel Chrome	Stainless Steel	Super Brite	Metroseal II	Designer (Epoxy)
ESTER	RANK	RANK	RANK	RANK	RANK
Diocetyl phthalate (DOP)	2	2	2	1	1
ETHER					
Ethyl ether	2	2	2	2	2
FOODSTUFF					
Orange juice	1	1	1	1	1
Salad oil	1	1	1	1	1
Vegetable oil	1	1	1	1	1
Vinegar	2	1	2	2	2
HALOGEN					
Carbon tetrachloride	1	1	3	1	1
Chlorine	2	2	3	2	2
Freon	2	2	3	1	1
Methylene Chloride	1	1	3	1	1
Perchloroethylene	1	1	3	1	1
Trichloroethylene	1	1	3	1	1
HYDROCARBON, ALIPHATIC					
Kerosene	2	2	2	2	1
HYDROCARBON, AROMATIC					
Benzene	2	2	2	2	2
Naptha	2	2	2	1	1
Toluene	1	1	2	1	1
HYDROCARBON, COMMON					
Brake fluid	2	2	2	1	1
Diesel fuel	1	1	1	1	1
Engine oil	1	1	1	1	1
Gasoline	2	2	2	1	1
Grease	1	1	1	1	1
Hydraulic fluid	2	2	2	1	1
Turpentine	1	1	1	1	1
KETONE					
Acetone	1	1	1	2	2
Methyl ethyl ketone (MEK)	1	1	1	2	2
ORGANIC COMPOUND					

Load Ratings:

Post Type Wall Mount: Not to exceed 250 lbs. (113 kg.) **total** per shelf system regardless of the number of shelf tiers.

Direct Wall Mount: Not to exceed 200 lbs. (91 kg.) **total** per shelf system.

Key To Ranking Chemical Resistance

1. Excellent – For use under normal conditions.
2. Acceptable – Long term exposure under severe conditions (high temperature, stress, etc.) may cause loss of mechanical properties or appearance.
3. Marginal – For use only where significant loss of mechanical properties or appearance is acceptable.
4. Do not use – Causes severe degradation.

NOTE: All ratings are based on standard product operating temperatures as defined in the product application chart.

A resistance rating of 1 or 2 is considered to be within acceptable limits of the product and should not be cause for concern.