



Item# \_\_\_\_\_

Job \_\_\_\_\_

## qwikSIGHT™ Basket Supply System

Quick to find, quick to access, quick to retrieve, quick to restock the supplies that you need.

- **Cleaner Containment:** Open wire basket contains supplies, provides better light penetration and prevents dust accumulation.
- **Better Accessibility:** Cantilever design provides open access to see and access stored contents. Baskets can be angled, especially at higher levels, to provide easier access to stored items.
- **Better Visibility:** Absence of front posts and the waterfall effect of narrow baskets placed directly above deeper baskets provides more visibility to stored contents.
- **Durable Construction:** Structure has three crossbars on single sided units and four on double, to keep uprights parallel and keep the structure square during daily use and after incidental contact. Bottom dust cover is directly supported by structure for years of trouble free use.
- **Organized Storage:** Snap in dividers, available in 12" (305mm) and 18" (457mm) depths, fit flush with basket floor to organize contents without snagging supplies in the basket below.
- **Protective and aesthetic:** Uprights have a durable baked on epoxy coated finish in an attractive light taupe color. Baskets are coated with a thicker layer to soften the wire ends and eliminate sharp edges.
- **Easy Adjustability:** Numbered uprights allow for quick, tool free, adjustment at 1" (25mm) intervals along the entire height of the upright.
- **Flexible Configurations:** Single sided or space saving double sided for back to back configurations. Stationary or mobile to make cleaning easier. Space efficient direct mount caster configuration or extension bars to increase stability when moved.
- **Adaptable Basket:** Unique baskets can be mounted to qwikSIGHT uprights or hung on louvered wall panels.
- **Accessories:** Full length clear label holders or colored label holders help to quickly locate and identify needed accessories. Slanted shelves, wall panels and hooks provide an added level of organization.





## qwikSIGHT™ Basket Supply System

### Specifications

**Frame:** 1" x 2" (25mm x 51mm) epoxy coated steel tubing uprights, notched and numbered on 1" increments for easy basket adjustment. Three ½" x 2" (13mm x 51mm) epoxy coated steel cross bars – two mounted on vertical upright, one mounted on bottom horizontal section to maintain a parallel, rigid structure. Frames are 74" (1880mm)H and available single sided, 21 ½" (546mm)D or double sided 40½" (1029mm)D. Four bars are provided on double sided units.

**Dust Cover:** Solid, epoxy coated steel, directly supported by steel frame to provide stable, rugged performance.

**Color:** Light Taupe

**Stationary or Mobile\*:** Stationary units include four levelers to compensate for uneven floor surface. Mobile units use four 4" (102mm) diameter brake casters to fix units in place. Casters can mount direct to frame to reduce footprint and maximize storage efficiency or use optional caster extension bars to increase stability when moving\*.

**Baskets:** Wire baskets are constructed with ½"(13mm) grid spacing, with a thick epoxy finish to cover wire ends and prevent sharp edges. Baskets include brackets that can be installed along 1" (25mm) notches in upright at one of three positions, horizontal, 11° or 21° upward slant. Available in 12" (305mm) or 18" (457mm) depths and 18" (457mm), 36" (914mm) or 48" (1219mm) lengths. Baskets accept optional dividers and label holders.

**Weight Capacity:** 100lbs (45kg) per basket, 375lbs (170kg) per mobile unit, 500lbs (227kg) per stationary unit

Catalog Number	Description	Dimensions (DxWxH)		Pkd. Wt.	
		in.	mm	lbs.	kg
<b>Single Sided - Frames with Dust Cover**</b>					
QB1874-1	18"L SGL Starter - Frames, Bars, Shelf	21½ x 19½ x 74	546 x 495 x 1880	36	16
QB3674-1	36"L SGL Starter - Frames, Bars, Shelf	21½ x 37½ x 74	546 x 953 x 1880	46	21
QB4874-1	48"L SGL Starter - Frames, Bars, Shelf	21½ x 49½ x 74	546 x 1257 x 1880	56	25
QB1874-1A	18"L SGL Adder - Frames, Bars, Shelf	21½ x 18½ x 74	546 x 470 x 1880	25	11
QB3674-1A	36"L SGL Adder - Frames, Bars, Shelf	21½ x 36½ x 74	546 x 927 x 1880	35	16
QB4874-1A	48"L SGL Adder - Frames, Bars, Shelf	21½ x 48½ x 74	546 x 1232 x 1880	45	20
<b>Dual Sided - Frames with Dust Cover</b>					
QB1874-2	18" DBL Starter - Frames, Bars, Shelves	40½ x 19½ x 74	1029 x 495 x 1880	43	20
QB3674-2	36" DBL Starter - Frames, Bars, Shelves	40½ x 37½ x 74	1029 x 953 x 1880	55	25
QB4874-2	48" DBL Starter - Frames, Bars, Shelves	40½ x 49½ x 74	1029 x 1257 x 1880	67	30
QB1874-2A	18" DBL Adder - Frames, Bars, Shelves	40½ x 18½ x 74	1029 x 470 x 1880	30	14
QB3674-2A	36" DBL Adder - Frames, Bars, Shelves	40½ x 36½ x 74	1029 x 927 x 1880	42	19
QB4874-2A	48" DBL Adder - Frames, Bars, Shelves	40½ x 48½ x 74	1029 x 1232 x 1880	54	24
<b>Casters and Caster Extension Bars</b>					
QB4B	4" Diameter Brake Caster, qty 1	1¼ x 4	32 x 102	7	3
QB18EB	18"D Caster Extension Bar - Single Sided	26⅞ x 1⅞ x ½	664 x 29 x 13	10	5
QB36EB	36"D Caster Extension Bar - Dual Sided	44¼ x 1⅞ x ½	1124 x 29 x 13	13	6
<b>Baskets</b>					
QB1218B	12"Dx18"L Basket w/ Brackets	12 x 18 x 7	305 x 457 x 178	7	3
QB1236B	12"Dx36"L Basket w/ Brackets	12 x 36 x 7	305 x 914 x 178	10	5
QB1248B	12"Dx48"L Basket w/ Brackets	12 x 48 x 7	305 x 1219 x 178	13	6
QB1818B	18"Dx18"L Basket w/ Brackets	18 x 18 x 7	457 x 457 x 178	8	4
QB1836B	18"Dx36"L Basket w/ Brackets	18 x 36 x 7	457 x 914 x 178	13	6
QB1848B	18"Dx48"L Basket w/ Brackets	18 x 48 x 7	457 x 1219 x 178	16	7

\* Mobile units are intended to be moved for cleaning or relocating. Not designed for transport.

\*\*Levelers add 5/8" - 1 3/8" (16 - 35mm) to overall height for stationary. Caster with extender adds 6" (152mm)H and caster only adds 5 ½" (140mm)H  
Basket front inside height is 3" (76mm)H



Job \_\_\_\_\_

## qwikSIGHT™ Basket Supply System

Description	Dimensions WxL		Height		Starter Cat. No.	Adder Cat. No.
	in.	mm	in.	mm		
<b>Single Sided Stationary* 6 Level - Three 12" (305mm)D, Three 18" (457mm)D Baskets</b>						
18"L, 6 BSKT 3-18, STATIONARY	21 ½ x 19 ½	546 x 495	74	1880	QB118-S6	QB118-S6A
36"L, 6 BSKT 3-18, STATIONARY	21 ½ x 37 ½	546 x 953	74	1880	QB136-S6	QB136-S6A
48"L, 6 BSKT 3-18, STATIONARY	21 ½ x 49 ½	546 x 1257	74	1880	QB148-S6	QB148-S6A
<b>Single Sided Stationary* 7 Level - Three 12" (305mm)D, Four 18" (457mm)D Baskets</b>						
18"L, 7 BSKT 4-18, STATIONARY	21 ½ x 19 ½	546 x 495	74	1880	QB118-S7	QB118-S7A
36"L, 7 BSKT 4-18, STATIONARY	21 ½ x 37 ½	546 x 953	74	1880	QB136-S7	QB136-S7A
48"L, 7 BSKT 4-18, STATIONARY	21 ½ x 49 ½	546 x 1257	74	1880	QB148-S7	QB148-S7A
<b>Single Sided Mobile** 6 Level - Three 12" (305mm)D, Three 18" (457mm)D Baskets</b>						
18"L, 6 BSKT 3-18, MOBILE	21 ½ x 19 ½	546 x 495	79 ½	2019	QB118-M6	QB118-M6A
36"L, 6 BSKT 3-18, MOBILE	21 ½ x 37 ½	546 x 953	79 ½	2019	QB136-M6	QB136-M6A
48"L, 6 BSKT 3-18, MOBILE	21 ½ x 49 ½	546 x 1257	79 ½	2019	QB148-M6	QB148-M6A
<b>Single Sided Mobile** 7 Level - Three 12" (305mm)D, Four 18" (457mm)D Baskets</b>						
18"L, 7 BSKT 4-18, MOBILE	21 ½ x 19 ½	546 x 495	79 ½	2019	QB118-M7	QB118-M7A
36"L, 7 BSKT 4-18, MOBILE	21 ½ x 37 ½	546 x 953	79 ½	2019	QB136-M7	QB136-M7A
48"L, 7 BSKT 4-18, MOBILE	21 ½ x 49 ½	546 x 1257	79 ½	2019	QB148-M7	QB148-M7A



QB148-S7



QB136-M7

Description	Dimensions WxL		Height		Starter Cat. No.	Adder Cat. No.
	in.	mm	in.	mm		
<b>Double Sided Stationary* 6 Level - Six 12" (305mm)D, Six 18" (457mm)D Baskets</b>						
18"L, 12 BSKT 6-18, STATIONARY	40 ½ x 19 ½	546 x 495	74	1880	QB218-S12	QB218-S12A
36"L, 12 BSKT 6-18, STATIONARY	40 ½ x 37 ½	546 x 953	74	1880	QB236-S12	QB236-S12A
48"L, 12 BSKT 6-18, STATIONARY	40 ½ x 49 ½	546 x 1257	74	1880	QB248-S12	QB248-S12A
<b>Double Sided Mobile** 6 Level - Six 12" (305mm)D, Six 18" (457mm)D Baskets</b>						
18"L, 12 BSKT 6-18, MOBILE	40 ½ x 19 ½	546 x 495	79 ½	2019	QB218-M12	QB218-M12A
36"L, 12 BSKT 6-18, MOBILE	40 ½ x 37 ½	546 x 953	79 ½	2019	QB236-M12	QB236-M12A
48"L, 12 BSKT 6-18, MOBILE	40 ½ x 49 ½	546 x 1257	79 ½	2019	QB248-M12	QB248-M12A
<b>Double Sided Stationary* 7 Level - Six 12" (305mm)D, Eight 18" (457mm)D Baskets</b>						
18"L, 14 BSKT 8-18, STATIONARY	40 ½ x 19 ½	546 x 495	74	1880	QB218-S14	QB218-S14A
36"L, 14 BSKT 8-18, STATIONARY	40 ½ x 37 ½	546 x 953	74	1880	QB236-S14	QB236-S14A
48"L, 14 BSKT 8-18, STATIONARY	40 ½ x 49 ½	546 x 1257	74	1880	QB248-S14	QB248-S14A
<b>Double Sided Mobile** 7 Level - Six 12" (305mm)D, Eight 18" (457mm)D Baskets</b>						
18"L, 14 BSKT 8-18, MOBILE	40 ½ x 19 ½	546 x 495	79 ½	2019	QB218-M14	QB218-M14A
36"L, 14 BSKT 8-18, MOBILE	40 ½ x 37 ½	546 x 953	79 ½	2019	QB236-M14	QB236-M14A
48"L, 14 BSKT 8-18, MOBILE	40 ½ x 49 ½	546 x 1257	79 ½	2019	QB248-M14	QB248-M14A



QB236-M12

\*Levelers add ¾" - 1 ¾" (16 - 35mm) to overall height for stationary.

\*\*Mobile units are intended to be moved for cleaning or relocating. Not designed for transport.

\*\*Caster with extender adds ½" (13mm) to overall mobile unit height.

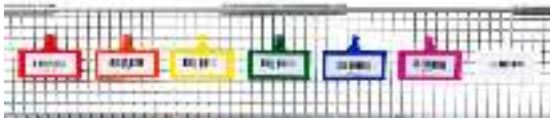
**Adder Units**—deduct 1" (25mm) from unit length.

# TIM CAMPBELL 800-400-7500

Job \_\_\_\_\_



## qwikSIGHT™ Basket Supply System



Colored Label Holder (shown with labels)

- QB03LHRD** - Red   
 **QB03LHOR** - Orange   
 **QB03LHYL** - Yellow  
**QB03LHGR** - Green   
 **QB03LHBL** - Blue   
 **QB03LHPK** - Pink  
**QB03LHCL** - Clear



**QB36LHC** Clear Label Holder  
(shown with labels)



**QB12D**  
**QB18D**

Description	Dimension WxL		Height		Pkd. Wt.		Catalog Number
	in.	mm	in.	mm	lbs.	kg	
<b>Dividers</b>							
3"L Divider	6	152	3	76	.2	.1	<b>QB03D</b>
6"L Divider	6	152	6	152	.4	.2	<b>QB06D</b>
12"L Divider front to back	12	305	6	152	.5	.2	<b>QB12D</b>
18"L Divider front to back	18	457	6	152	.8	.4	<b>QB18D</b>



**QB03D**



**QB06D**

<b>Label Holders</b>							
18"L Label Holder, Clear, qty 1	17	432	1 ¼	32	.2	.1	<b>QB18LHC</b>
36"L Label Holder, Clear, qty 1	35	889	1 ¼	32	.3	.1	<b>QB36LHC</b>
48"L Label Holder, Clear, qty 1	47	1194	1 ¼	32	.4	.2	<b>QB48LHC</b>
3"L Label Holder, qty 50 - (Colors and catalog numbers above)	3	76	1 ¼	32	.6	.3	<b>QB03LH</b> (color)

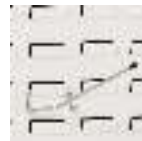
<b>Louvered Panel Mounting Brackets</b>							
18" Frame Mounting Bracket	5	127	18	457	3	1	<b>QBLP18MTG</b>
36" Frame Mounting Bracket	5	127	36	914	5	2	<b>QBLP36MTG</b>



Description	Dimension WxL		Height		Pkd. Wt.		Cat. No.
	in.	mm	in.	mm	Lbs.	kg	

<b>Louvered Panel and Accessories</b>							
18" x 19" Louvered Panel	18	457	19	483	<b>3</b>	<b>1</b>	<b>QB1819WP</b>
18" x 61" Louvered Panel	18	457	61	1549	<b>9</b>	<b>4</b>	<b>QB1861WP</b>
36" x 19" Louvered Panel	36	914	19	483	<b>5</b>	<b>2</b>	<b>QB3619WP</b>
36" x 61" Louvered Panel	36	914	61	1549	<b>17</b>	<b>8</b>	<b>QB3661WP</b>
9" Light Duty Spike - Single Rod	9	229			.1	.1	<b>QB09WPS</b>
10" Light Duty Spike - Dual Rod	10	254			.2	.1	<b>QB10WPS</b>
12" Equipment Spike - Heavy Duty	12	305			<b>1</b>	<b>.5</b>	<b>QB12WPS</b>
12" x 18" Basket	12 x 18	305 x 457	7	178	<b>6</b>	<b>3</b>	<b>QB1218</b>
12" x 36" Basket	12 x 36	305 x 914	7	178	<b>10</b>	<b>4</b>	<b>QB1236</b>
12" x 48" Basket	12 x 48	305 x 1219	7	178	<b>12</b>	<b>5</b>	<b>QB1248</b>
18" x 18" Basket	18 x 18	457 x 457	7	178	<b>7</b>	<b>3</b>	<b>QB1818</b>
18" x 36" Basket	18 x 36	457 x 914	7	178	<b>12</b>	<b>5</b>	<b>QB1836</b>
18" x 48" Basket	18 x 48	457 x 1219	7	178	<b>15</b>	<b>7</b>	<b>QB1848</b>

**QB3619WP** with  
One **QB1236**  
One **QB1836**



**QB09WPS**



**QB10WPS**



**QB12WPS**